

The organisation

W. Classen GmbH & Co. KG

Werner-von-Siemens-Straße 18-20, 56759 Kaiseresch, Germany

has been assessed and certified as meeting the requirements of the standard

PEFC - Chain of Custody

PEFC ST 2002:2013 – "Chain of Custody of Forest Based Products – Requirements" - dated 24/05/2013
PEFC ST 2001:2008, Second Edition – "PEFC Logo Usage Rules – Requirements" – dated 26/11/2010
as amended and published on www.pefc.org

This certification includes the following products

The scope of registration appears on page 2 of this certificate

This certificate is valid from 2 August 2016 until 16 August 2020
and remains valid subject to satisfactory surveillance audits
Recertification audit due before 27 May 2020
Issue 5. Certified since August 2010

This is a multi-site certification

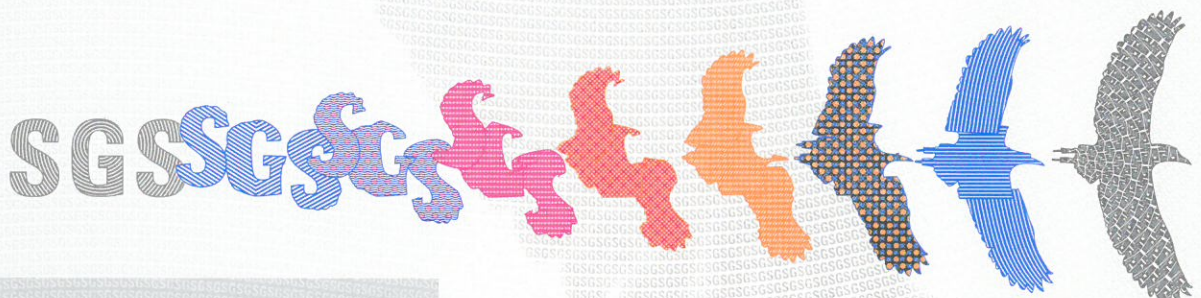
Additional site details are listed on the subsequent page

SGS Ref # DE13/81840230

Authorised by

SGS Société Générale de Surveillance SA Systems & Services Certification
Technoparkstrasse 1 8005 Zurich Switzerland
t +41 (0)44 445-16-80 f +41 (0)44 445-16-88 www.ch.sgs.com

Organisations with a valid PEFC chain of custody certificate can only use the PEFC Logo with unique PEFC license logo number based on PEFC Logo usage license contract issued by the PEFC Council or another entity authorised by the PEFC Council and in accordance with the PEFC logo usage rules.



W.Classen GmbH & Co.KG

PEFC - Chain of Custody

Issue 5

This certification includes the following products

Einkauf von PEFC-zertifizierten HDF-Platten, Herstellung und Verkauf von beschichteten, PEFC-zertifizierten Platten und PEFC-zertifiziertem Laminat-Fußboden mit der Prozentsatzmethode.

Einkauf von PEFC-zertifizierten Holzfertigwaren und Verkauf von PEFC-zertifizierten Holzfertigwaren mit der Methode der physischen Trennung.

Purchase of PEFC certified HDF boards, manufacture and sale of coated PEFC certified particle boards and laminate flooring using the percentage based method.

Purchase of PEFC certified finished products of wood and sale of finished products of wood using the physical separation method.

Additional facilities

**Classen Industries GmbH
An der Birkenpühlheide 6, 15837 Baruth, Germany**

**Akzenta Paneele & Profile
Werner-von-Siemens-Straße 18-20, 56759 Kaisersesch, Germany**

**Classen Holz Kontor GmbH
Werner-von-Siemens-Straße 18-20, 56759 Kaisersesch, Germany**

**Wiparquet Innenausbau Systeme GmbH
Werner-von-Siemens-Straße 18-20, 56759 Kaisersesch, Germany**

**Classen Vertriebs GmbH
Werner-von-Siemens-Straße 18-20, 56759 Kaisersesch, Germany**

**Dispoline GmbH
Werner-von-Siemens-Straße 18-20, 56759 Kaisersesch, Germany**

**Akzenta Vertriebs GmbH
Werner-von-Siemens-Straße 18-20, 56759 Kaisersesch, Germany**

**Classen Flooring International GmbH
Werner-von-Siemens-Straße 18-20, 56759 Kaisersesch, Germany**

**Fiberboard GmbH
An der Birkenpühlheide 4, 15837 Baruth, Germany**

